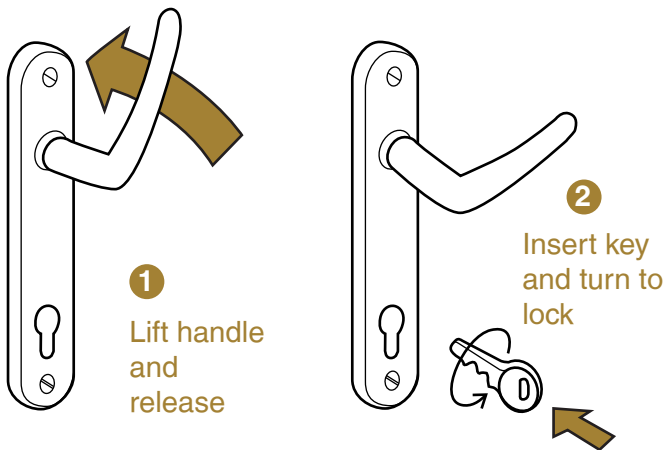


# Doors

## Operation Guidelines

### To lock the door

1 To lock lift the handle lever in an upwards direction to throw ALL security bolts; this will engage all locking points into the keeps.



2 Allow the handle to return to the horizontal position. **To deadlock**, turn the key one full turn towards the edge of the door. This will secure all the bolts. In this condition the handle cannot be pushed down. Remove the key and place in a safe location.

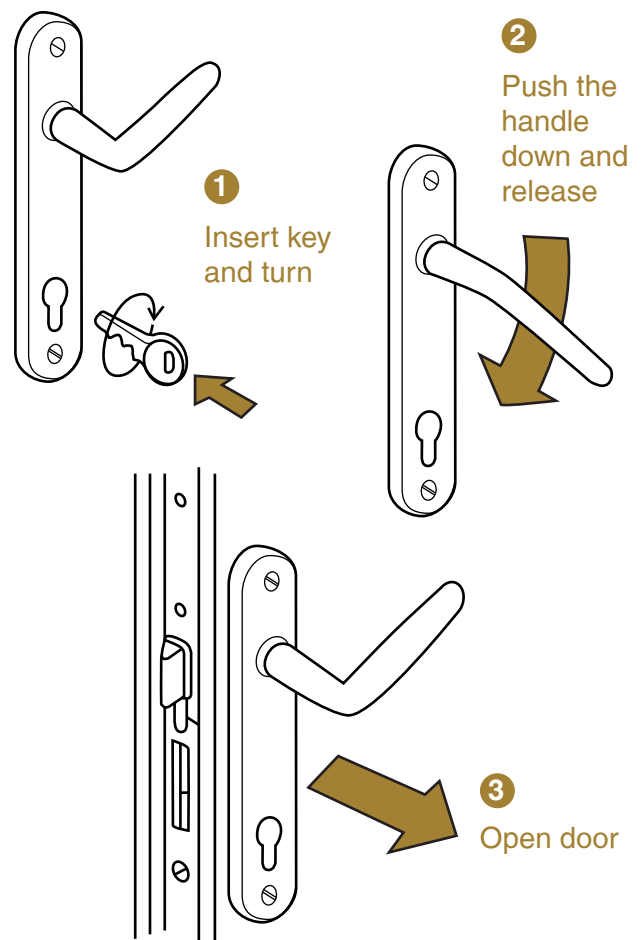
Please ensure that you use the key at all times to lock the door securely.

The use of the handle to engage the locking points does not completely lock the door; you must use the key to fully secure the door.

### To unlock the door

1 Turn the key one full turn away from the edge of the door; this will disengage the deadlocking security.

2 In order to retract the security bolts push the handle lever in a downwards direction (approximately 45°) the door is then free to open.



# Doors

## Operation Guidelines

If you have a split spindle/nightlatch or lever/pad operation on your doors (i.e. the door can only be opened from the outside using the key) please lift the handle lever or pad in an upwards direction to throw ALL security bolts (this will engage all locking points into the keeps). Allow the handle to return to the horizontal position.

**To deadlock**, turn the key one full turn towards the edge of the door. This will secure all the bolts. In this condition the handle cannot be pushed down.

**To unlock**, from outside turn the key one full turn away from the edge of the door to disengage the deadlocking security. Push the handle lever or pad in a downwards direction (approximately 45°) to retract the security bolts. An extra turn of the key towards the edge of the door is required to release the latch and open the door.

If you need any help with the operation or maintenance of your new window or door please contact your installer.

After entering, the door can be closed (engaging the latch only), in this position the door can be opened from the inside with the lever.

The door cannot be opened with the lever or pad from the outside – the key must be used (Nightlatch Action). To operate from inside follow standard door instructions.

### Using the Snib

- 1 To use the snib (A) on the lock, please lower the handle, slide the snib up over the latch bolt and release the handle.
- 2 To remove snib function lower the handle, slide the snib down and release the handle.

